

Influence of Heat Treatment on Dental Prostheses Produced by Additive Technology

Rajtúková V., Chromý L., Findrik Balogová A., Ižaríková G., Sinčák Konečná A., Hudák R.

Department of Biomedical Engineering and Measurement
Faculty of Mechanical Engineering
Technical university of Košice

Aim of study

Geometry comparison of dental prosthesis manufactured via SLM technology after:

- direct removal from the build platform
- heat treatment

Design and material

- 3Shape D700 dental scanner

- 3Shape CAD software

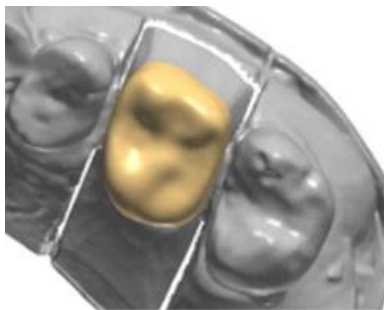
- Crown

- Two-unit bridges

- Three-unit bridges

Starbond Easy Powder 30 (Scheftner, Germany)

Co 61%, Cr 27.05%, W 8.5%, Si 1.6% and other elements (C, Fe, Mn) <0.1%.



a)



b)

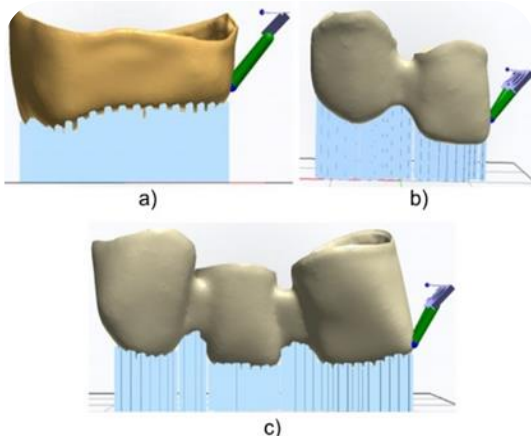


c)

Production of dental prosthesis

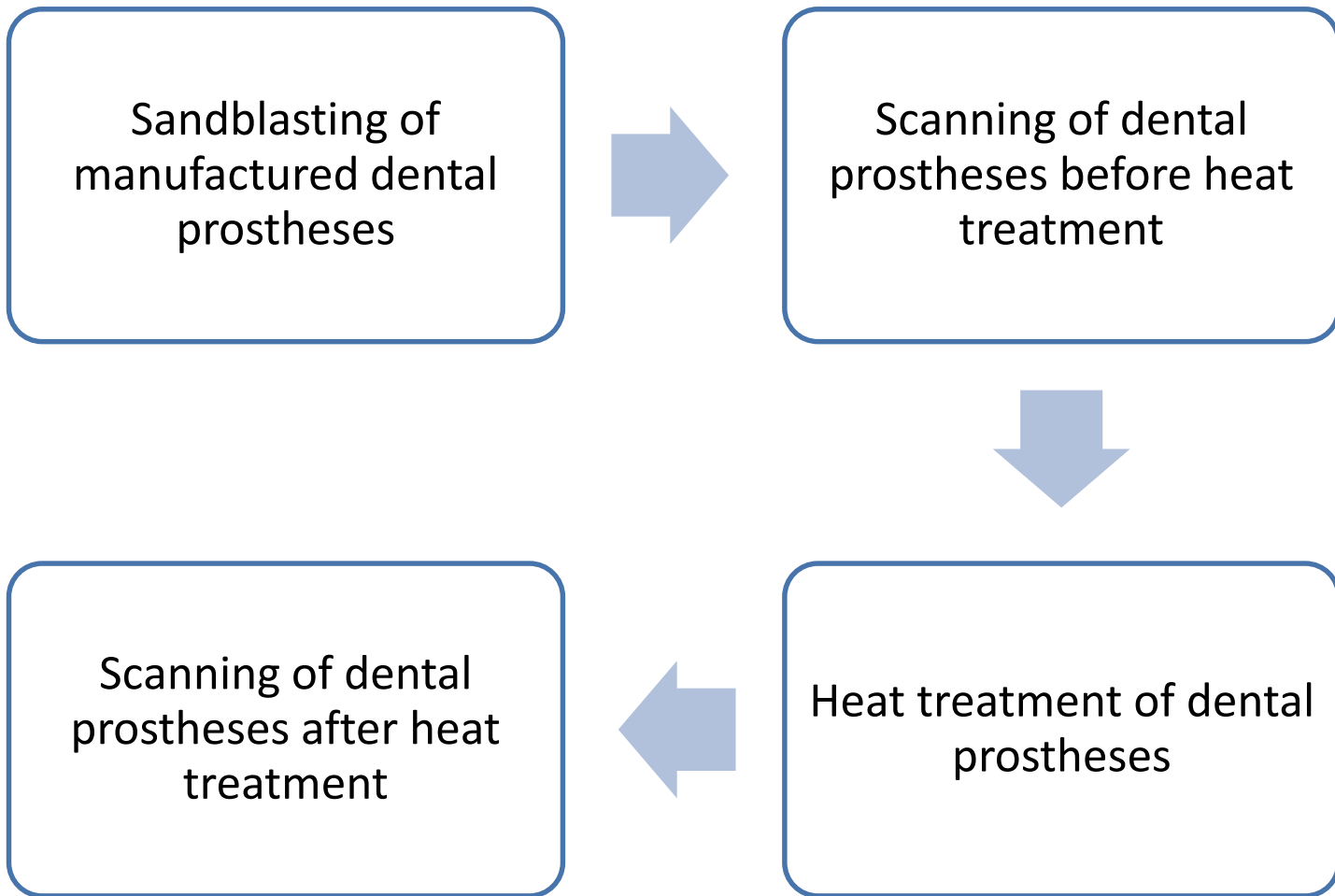
CAMbridge software
(3Shape, Denmark)

Mlab curing R
(Concept Laser, USA)



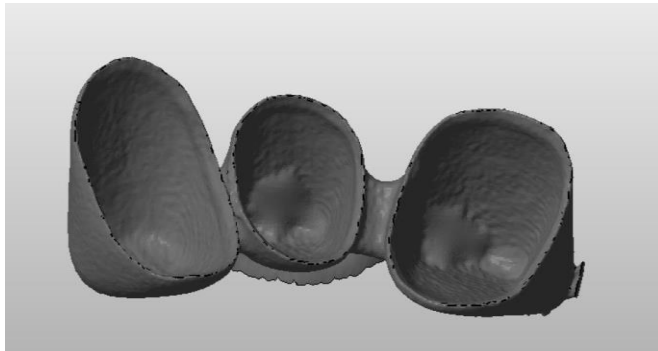
10 pc. crowns
10 pc. two-unit bridges
10 pc. three-unit bridges

Postprocessing of 3DP dental prosthesis

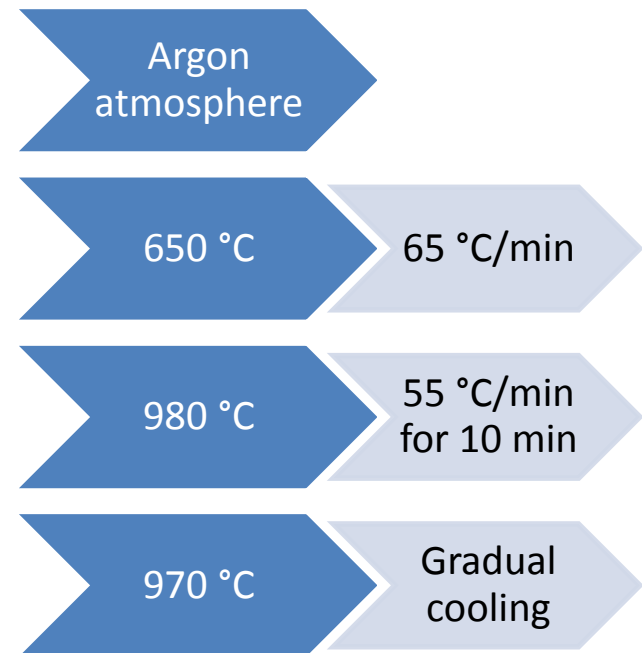


Scanning process and heat treatment

3Shape D700



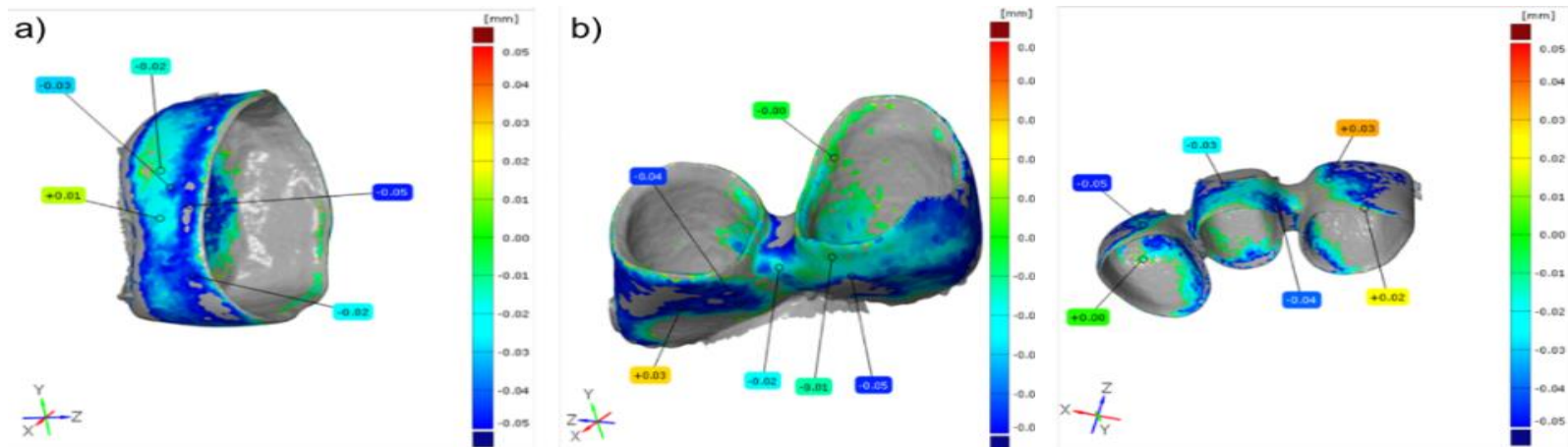
inFire HTC speed sintering
furnace (Sirona, USA)



Evaluation methodology

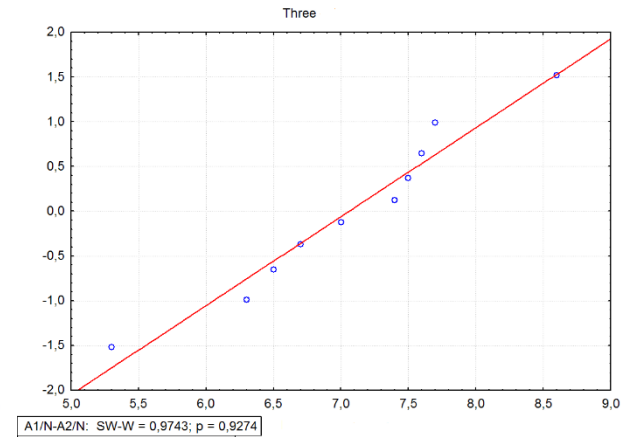
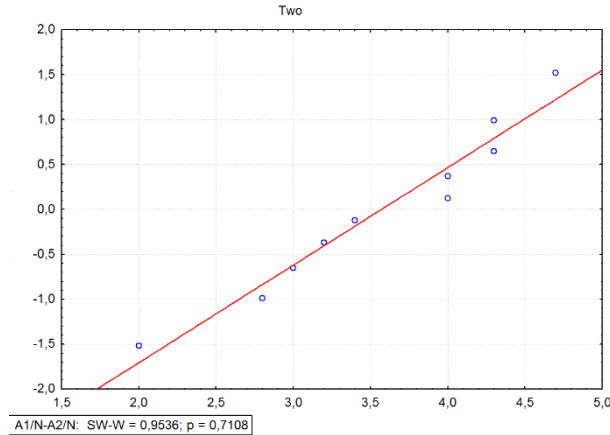
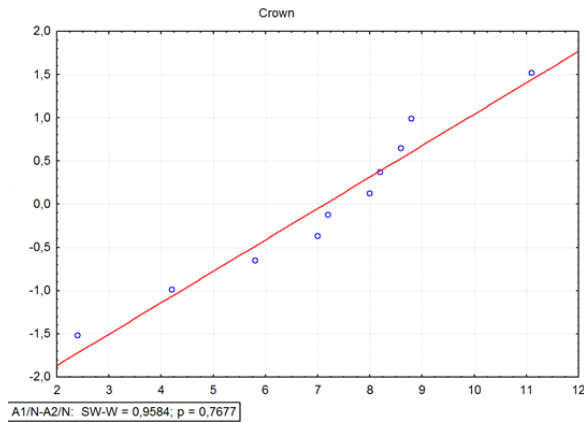
GOM Inspect software:

1. Dental models in .stl vs. scanned models without treatment – N/A1,
2. Dental models in .stl vs. scanned models after heat treatment – N/A2
3. Scanned models without heat treatment vs. Scanned models after heat treatment – A1/A2

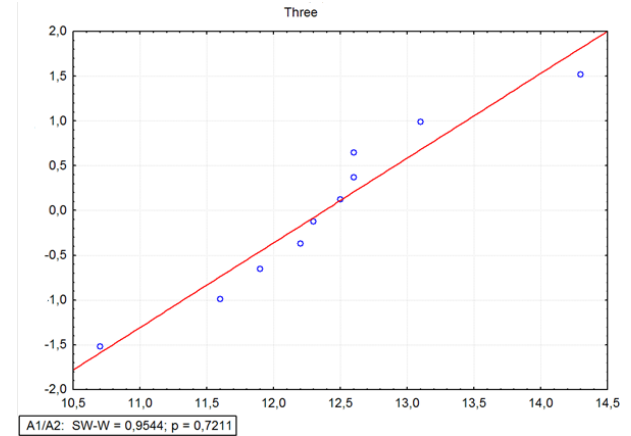
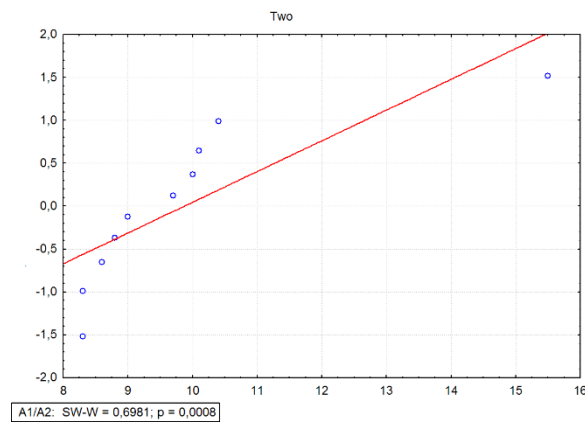
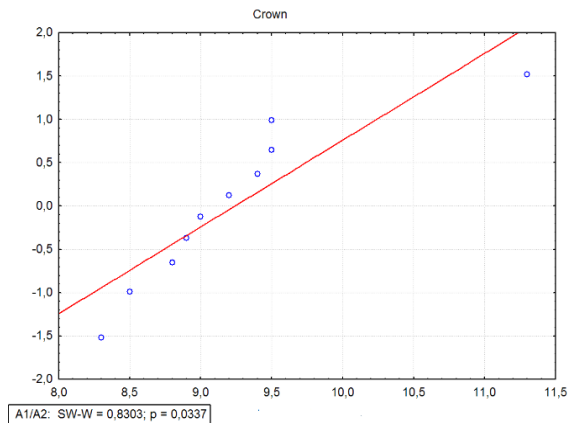


Results

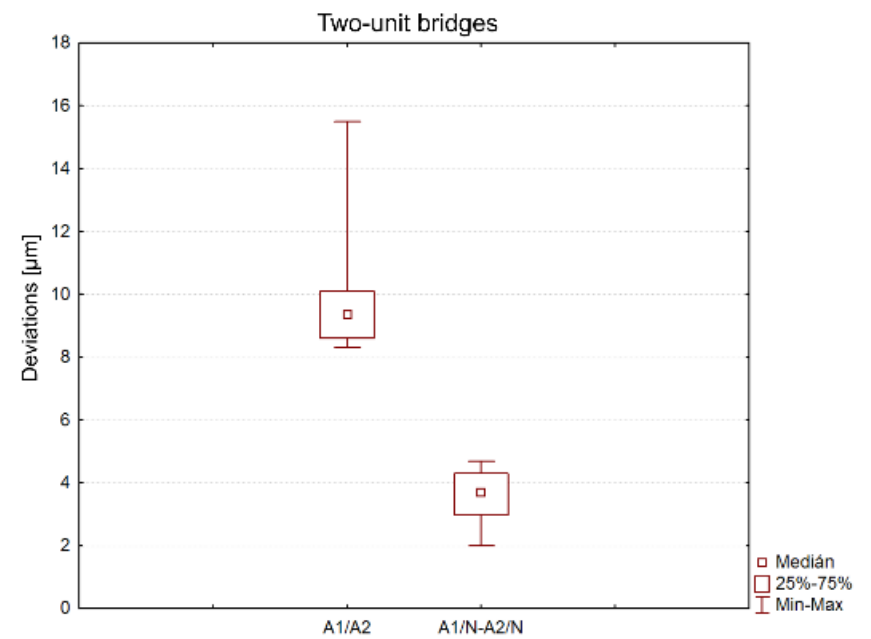
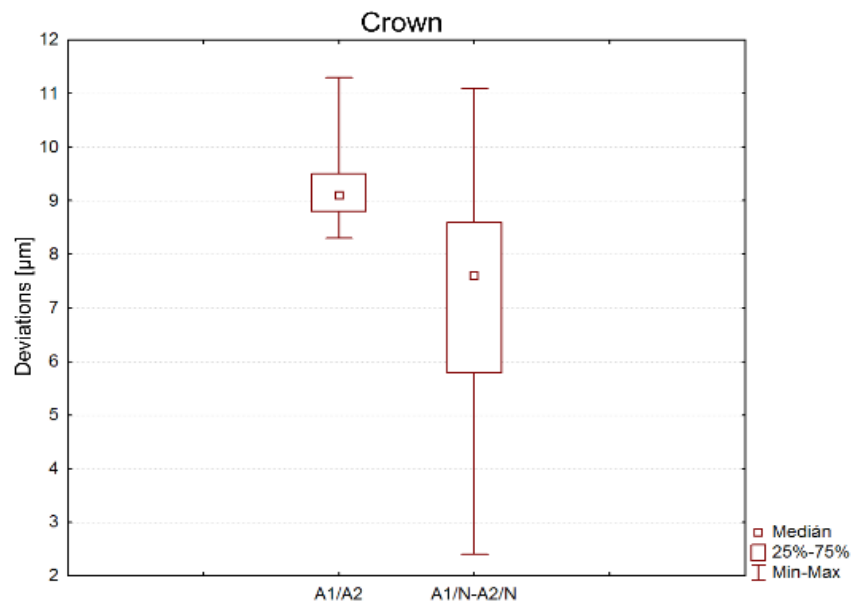
Shapiro-Wilk test of normality



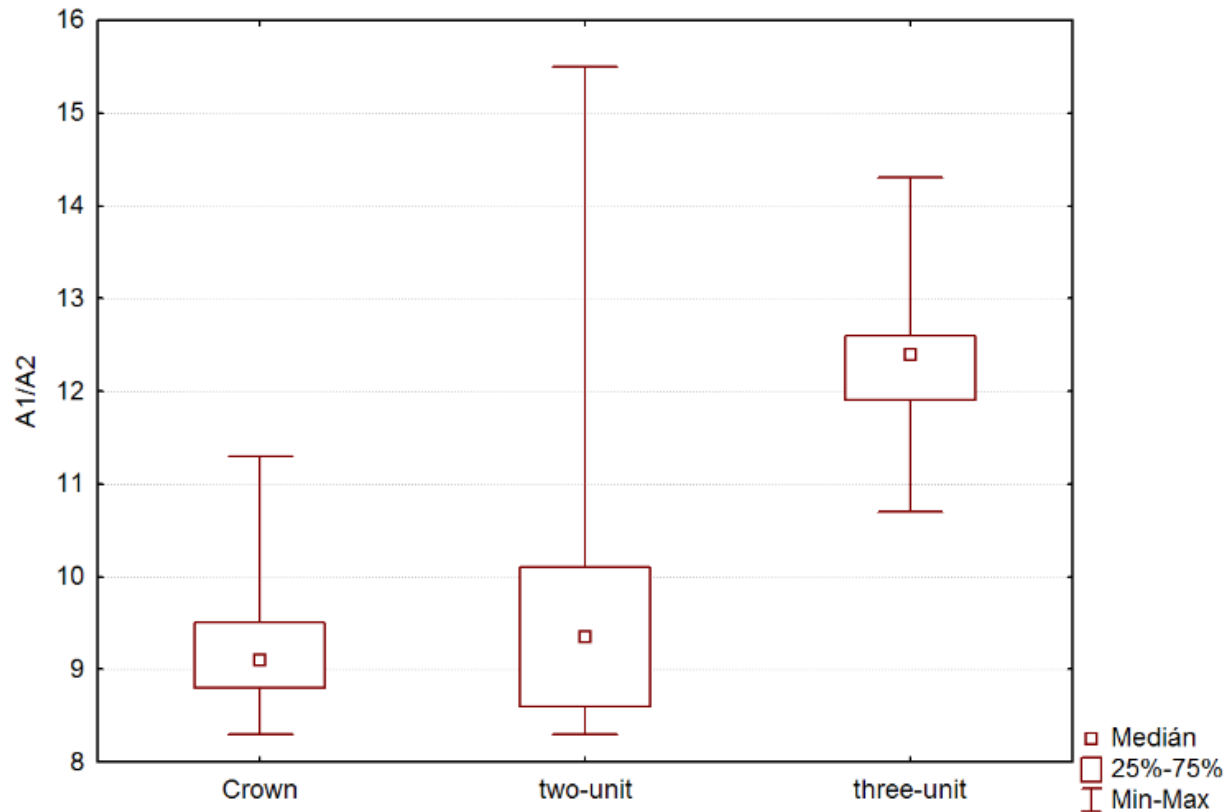
Probability p plot



Results



Results



Conclusion

- Pilot study of heat treatment influence on dental prosthesis
- The heat treatment method may also differ depending on the type of used metallic powder, its particle size, used machine and parameter settings during SLM

- Thank you for your attention!

THANK YOU FOR YOUR ATTENTION